

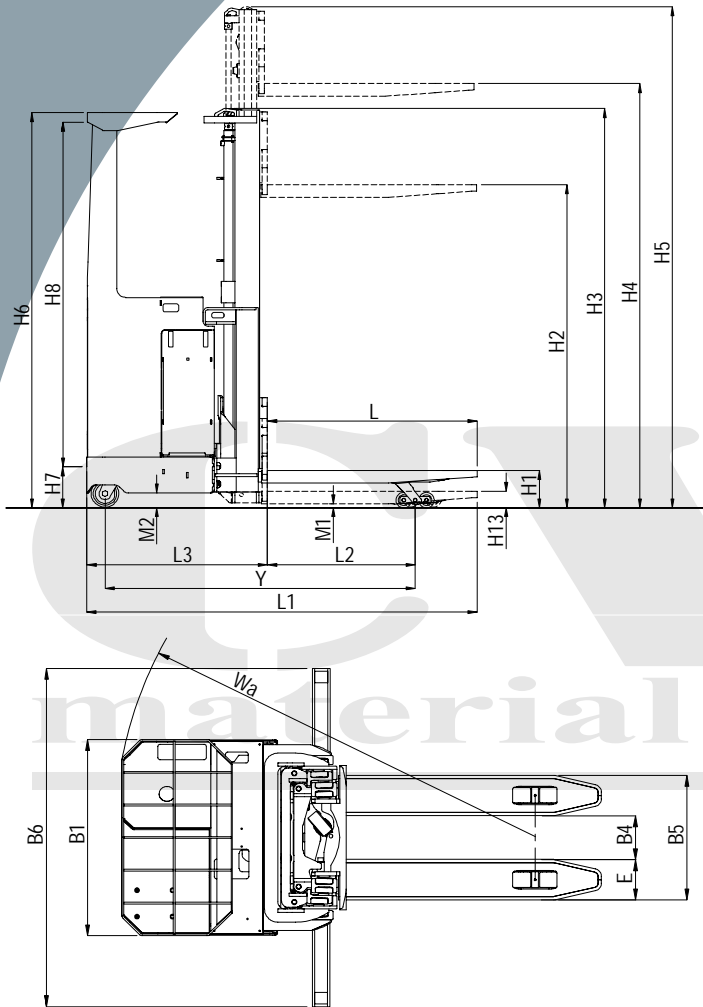


WWW.CVH.RU

LOC

АВЕКОЛОС





	H4 (mm)	min H3 (mm)	max H5 (mm)	H2 (mm)
Duplex TY	3200	2190	3760	
	3600	2390	4160	
	4200	2690	4760	
Duplex TFY	3300	2190	3760	1760
	3700	2390	4160	1960
	4300	2690	4760	2260
Triplex TTFY	4900 ¹⁾	2190	5335	1760
	5500 ²⁾	2390	5935	1960
	6400 ²⁾	2690	6835	2260

		SA/SD 13	SA/SD 16
1.1	Q (kg)	1300	1600
1.2	c (mm)	600	600
1.3	H4 (mm)		
1.4	kg	2000	2000
1.5	H1 (mm)	205	205
1.6	H2 (mm)		
1.7	H3 (mm)		
1.8	H5 (mm)		
1.9	/	m/s	0,17/0,25
1.10	/	m/s	0,40/0,31
2.1	/	m/s	2,2-3,3
2.2	/	%	11/15
2.3	Wa (mm)	1667/1885	1688/1896
2.4	Gbb(mm)	2407/2435	2428/2446
3.1	B6 (mm)	1542	1542
3.2	B4 (mm)	202	202
3.3	B5 (mm)	572	572
3.4	H6 (mm)	2205	2205
3.5	E (mm)	185	185
3.6	H13	88	88
3.7	L (mm)	1150	1150
3.8	Y (mm)	1477/1646	1487/1656
3.9	H7 (mm)	225	225
3.10	L3 (mm)	1014	1014
3.11	M2 (mm)	83	83
3.12	M1 (mm)	25/137	25/137
3.13	H8 (mm)	1935	1935
3.14	L2 (mm)	660/850	660/850
3.15	B1 (mm)	895	895
3.16	L1 (mm)	2120/2152	2132/2164
4.1	V	24	24
4.2	Ah	480	480
4.3	kW	3,0	3,0
4.4	kW	3,0	3,0
5.1	mm	85x70	85x70
5.2	mm	150x40x50	150x40x50
5.3	mm	125x255	125x255
6.1	320 Ah	kg	1478
6.2		kg	1218
7.1			
7.2			
7.3			