



**MANISCOPIC**

# MANISCOPIC MT 732



.....3200  
500

.....1620



.....6,90



.....440/80 - 24 156 TL



( )  
.....1200  
.....125 50  
.....1040  
.....126°



..... PERKINS (EUR III)



.....1104 - 44  
.....4/4400 3  
.....85  
.....1400 /



.....25 /



/ ( )  
.....7.3 / 6.7  
.....4.7 / 5  
.....6.8 / 6.3  
.....3 / 3.3



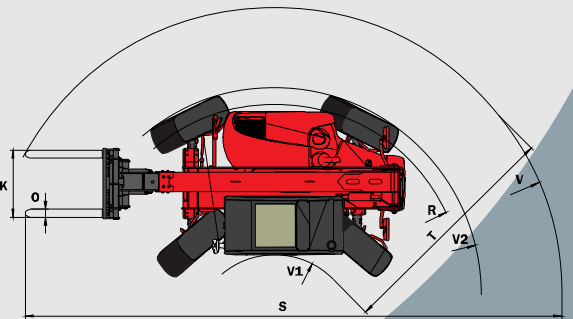
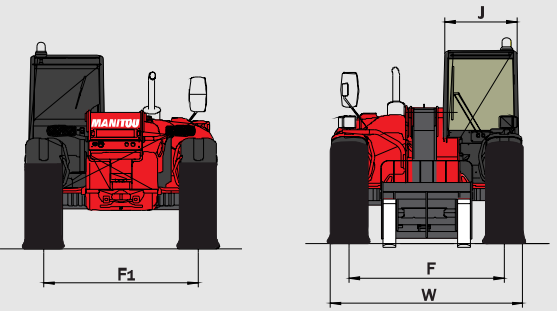
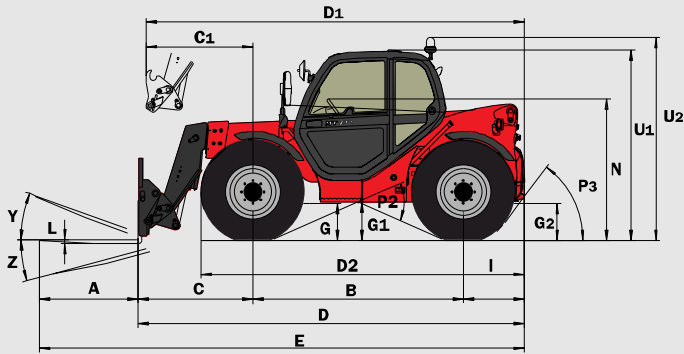
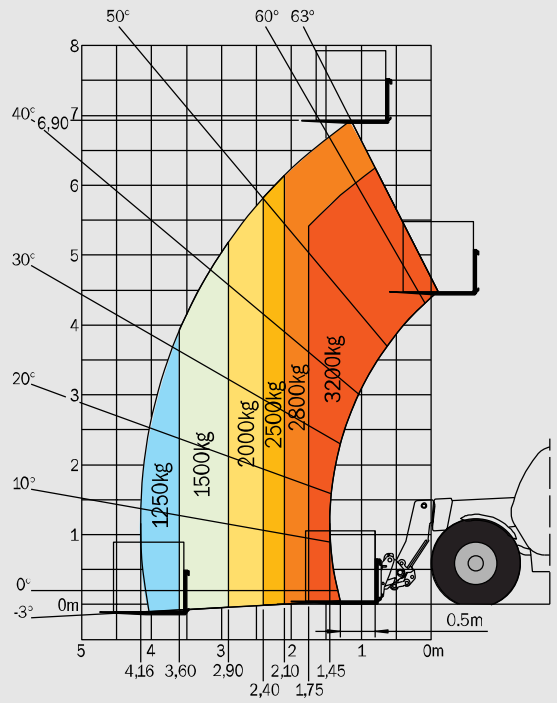
/ ..... 240 / 105 /



.....18,5  
.....10,5  
.....125  
.....15,5  
.....120



( ) .....7250  
.....2,26  
.....2,30  
.....3,76  
.....4,77  
.....0,44  
.....8400 daN



	732
A	1200
B	2560
C	1444
C1	1537
D	4767
D1	4767
D2	4860
E	5967
F	1846
F1	1846
G	455
G1	440
G2	440
I	763
J	865
K	1040
L	45
N	1690
O	125
P2	47.5°
P3	53°
R	3460
S	7591
T	3555
U1	2300
U2	2550
V	4805
V1	1250
W	2261
Y	12°
Z	114°

E-mail: sale@cvh.ru

E-mail: ural@cvh.ru

E-mail: spb@cvh.ru

E-mail : info@cvh.ru

Tel: +7 495 925 51 19

Web : http://www.cvh.ru

CVH material handling